

# Power Supply Units

## One Shot Octal Socket Power Supply

Warner Electric's One Shot Power Supply is a plug-in clutch/brake control designed for operation of AC or DC wrap spring clutches and brakes with a D-frame coil. The One Shot provides a single voltage pulse of 160 or 325 VDC for approximately 20MS, whether the customer supplied switch is momentarily closed or held closed.

The One Shot Power Supply is UL Listed when used with Warner Electric's octal socket, part no. 6001-101-001, or DIN rail mount octal socket, part no. 6001-101-002 (each purchased separately) and only UL-Recognized when used with other sockets. This unit may be mounted in any convenient position using the two mounting holes provided on the socket. For use with D-frame coils only.

Actuating the single pole, double throw (SPDT) switch energizes the solenoid coil. Releasing or resetting the switch charges an internal capacitor. A minimum of 20 milliseconds cycle time is required between operations.

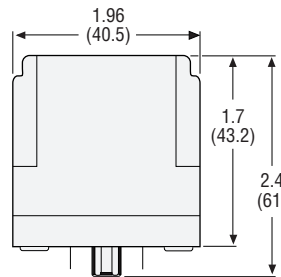


**One Shot  
Octal Socket Control  
P/N 901-00-019**

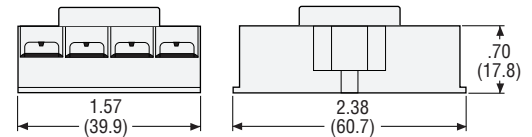
### Specifications (mm)

<b>AC Input</b>	115/230 VAC, 50/60 Hz 116V peak @ 115 VAC input 325V peak @ 230 VAC input
<b>Solenoid Operation</b>	Compatible with all 12, 24 and 90 VDC solenoid voltages and 115VAC solenoid coils
<b>Max. Current Load</b>	5 amps
<b>Cycle Rate</b>	1500 CPM maximum
<b>Terminals</b>	Amp Series 250, .250" Faston

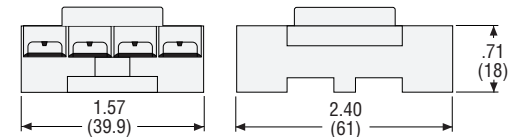
### Dimensions (mm)



**One Shot Control  
PN 901-00-019**

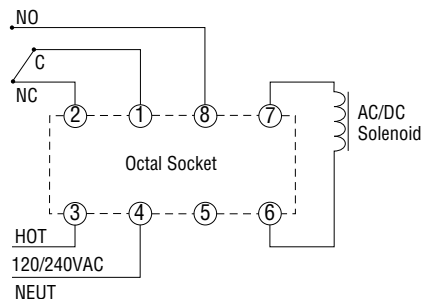


**Octal Socket P/N 6001-101-001**



**DIN Rail Mount 05 P/N 6001-101-002**

### Connection Diagram



## One Shot Power Supply

The One Shot Power Supply is available for use with standard AC as well as DC coils. The one shot provides a single voltage pulse whether the switch is momentarily closed, or held closed. The unit operates on either 120 or 230 AC, 50/60 Hz power and may be mounted in any convenient position by use of two mounting holes for #8-32 screws.

**One Shot Control**  
P/N 901-00-014

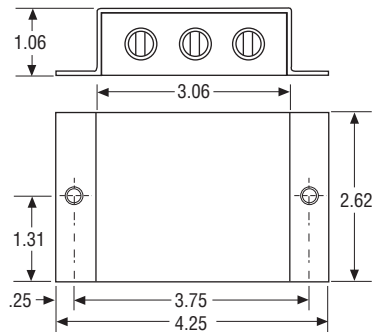


## Specifications (mm)

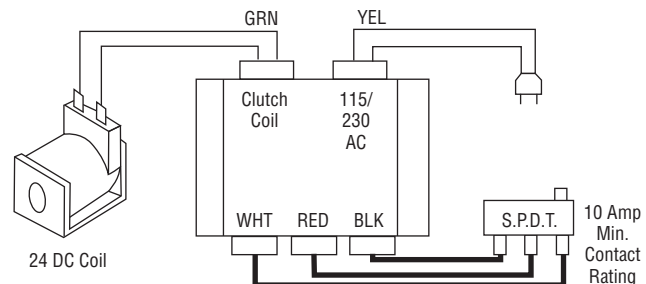
<b>AC Input</b>	162 DC peak @ 120 AC input 325 DC peak @ *230 AC input
<b>Line Frequency</b>	50/60 Hz
<b>Max. Current Load</b>	5 amps
<b>Cycle Rate</b>	400 CPM maximum
<b>Terminals</b>	Amp type 250 Fast-on

\* For use with D-frame coils only.

## Dimensions



## Connection Diagram



Actuating the single pole, double throw (SPDT) switch energizes the solenoid coil. Releasing or resetting the switch charges an internal capacitor. A minimum of 20 milliseconds cycle time is required between operations.